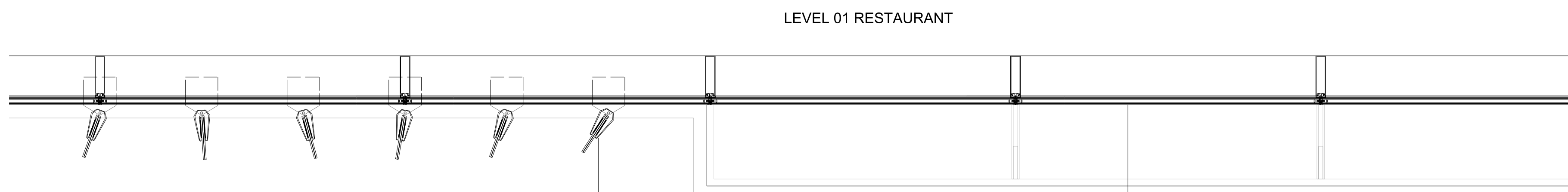


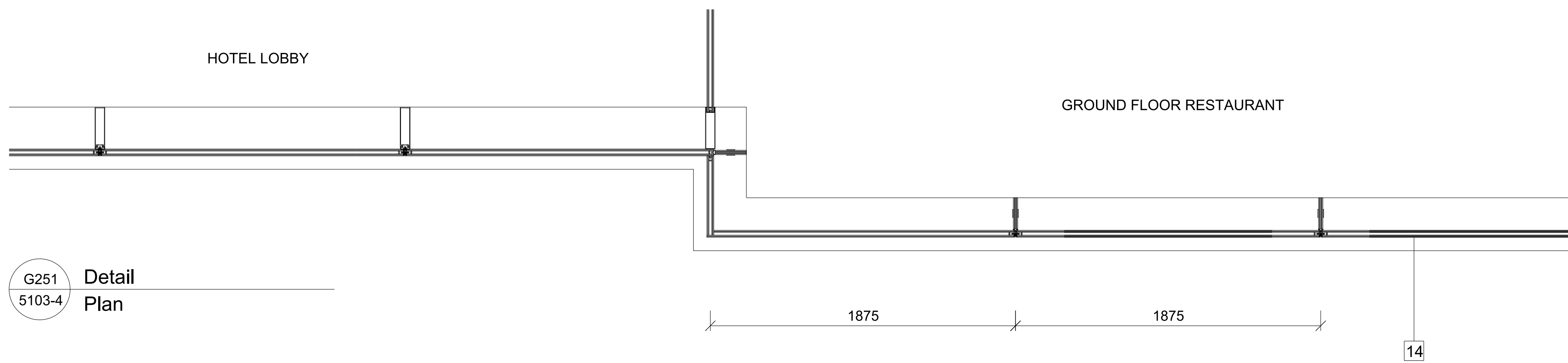
G251  
5103-1

Detail  
Elevation



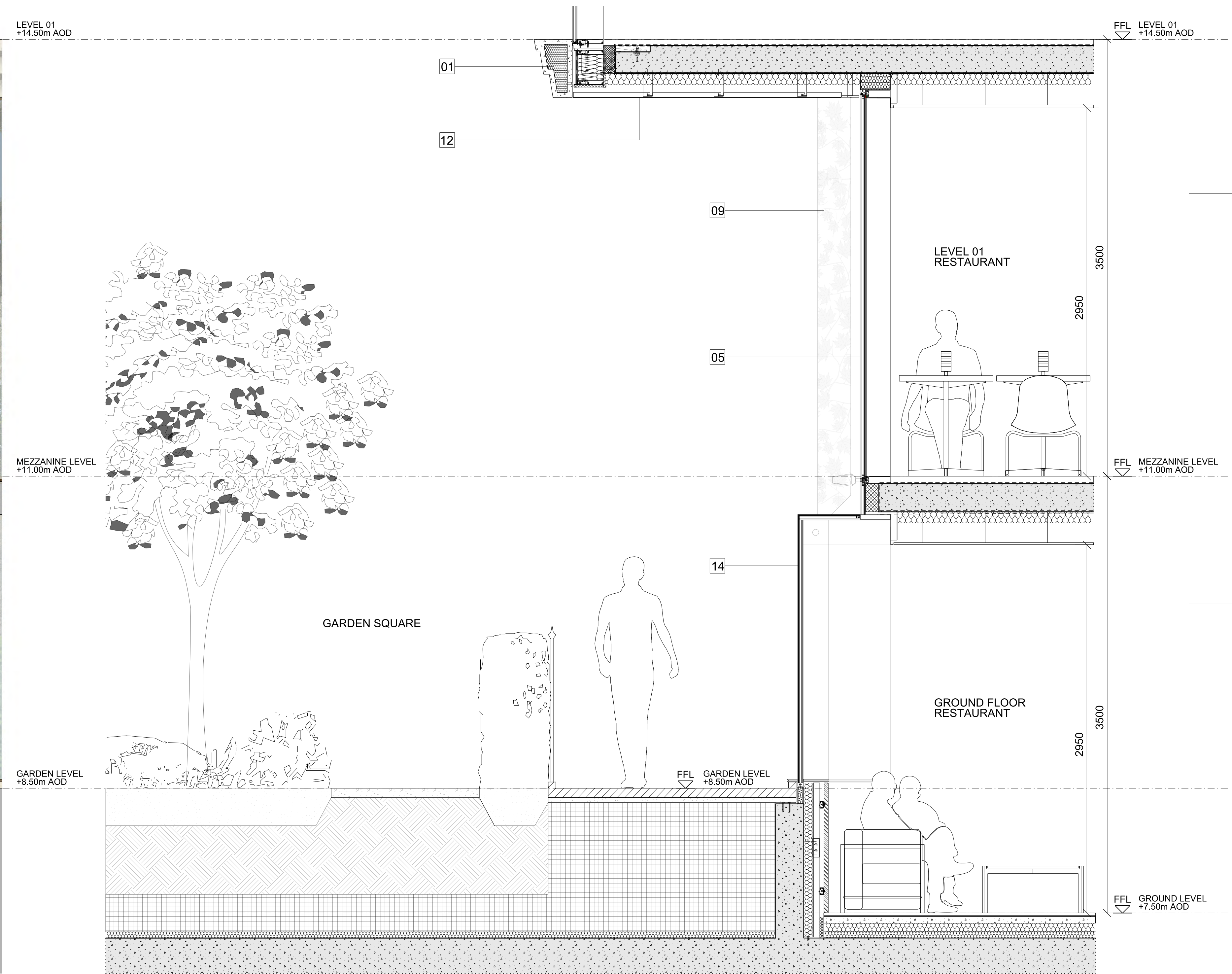
G251  
5103-3

Detail  
Plan



G251  
5103-4

Detail  
Plan



G251  
5103-2

Detail  
Section

#### ELEVATION KEY

- |    |   |    |   |
|----|---|----|---|
| 01 | PRE-CAST RECONSTITUTED STONE FLOOR PROFILE  | 13 | ANODISED BRONZE ALUMINIUM CLADDING PANEL  |
| 02 | PORTLAND STONE CLADDING PANELS WITH FILLED JOINTS                                       | 14 | CLEAR STRUCTURAL SILICONE GLAZING SYSTEM WITH LAMINATED GLASS MULLIONS  |
| 03 | BRONZE FRAME WITH LAMINATED FROSTED GLASS FINS WITH LEAF FRIT PATTERN                   | 15 | TEXTURED AND PATTERNED BRONZE CLADDING PANELS   |
| 04 | PERFORATED ANODISED BRONZE ALUMINIUM SCREEN/BALUSTRADE WITH LEAF PATTERN                | 16 | AUTOMATED GLASS REVOLVING DOORS WITH GLASS ROOF   |
| 05 | CLEAR FULL HEIGHT GLAZED UNITS IN ANODISED BRONZE ALUMINIUM FRAME                       | 17 | CLEAR FULL HEIGHT SINGLE GLAZED FIXED PANEL WITH BRONZE LEAF FRIT PATTERN                                     |
| 06 | BACKPAINTED FULL HEIGHT GLAZED UNITS WITH BRONZE ALUMINIUM FRAME                        | 18 | CLEAR FULL HEIGHT SINGLE GLAZED SLIDING DOOR  |
| 07 | CLEAR FULL HEIGHT GLAZED UNITS WITH BRONZE COLOURED LEAF FRIT PATTERN IN GLASS BUILD-UP | 19 | CLEAR FULL HEIGHT DOUBLE GLAZED SLIDING DOOR  |
| 08 | ANODISED BRONZE ALUMINIUM FASCIA TO ROLLER BLIND BOX                                    | 20 | CLEAR FULL HEIGHT DOUBLE GLAZED UNITS WITH EXPRESSED BRONZE ANODISED ALUMINIUM CAPPING TO MULLION AND TRANSOM |
| 09 | LAMINATED GLASS FINS WITH BRONZE COLOURED LEAF FRIT PATTERN IN GLASS BUILD-UP           | 21 | BRONZE ANODISED ALUMINIUM PLANTING SCREEN   |
| 10 | GLASS BALUSTRADE  | 22 | AUTOMATED GLASS SLIDING ENTRANCE DOORS  |
| 11 | BRONZE MOSAIC TILE INLAY TO PRE-CASE CONCRETE SOFFIT PANEL                              | 23 | RECONSTITUTED STONE REVEAL  |
| 12 | ANODISED BRONZE ALUMINIUM SOFFIT PANEL  | 24 | CLEAR FULL HEIGHT SINGLE GLAZED DOORS   |

This drawing is copyright  
Do not scale off dimensions.  
All dimensions to be checked on site by contractor.  
Contractor to report any dimensional discrepancies,  
errors or omissions prior to commencing on site.

NOTE:

NORTH

Rev	Date	Description	Rev	Date	Description
-	15/05/2019	Full Planning Application			
A	11/01/2019	GLA Callin Amendments			

500 0 500 1000 2000mm

Project Title  
Kensington Forum Hotel  
Kensington, London

Status  
PLANNING

Drawing Title  
Podium - Glazed Facade to Garden  
Restaurant

Job No	Scale	Date
10106	1:20@ A0	JAN 2019
Drawing No	Revision	
10106-A-DRG-Z0-G251-5103-PL	A	

**simpsonhaugh**

MANCHESTER  
Riverside, 4 Commercial St  
M4 6BT (0161) 835 7340  
www.simpsonhaugh.com

LONDON  
2nd Roberts Place  
London EC1A 1BB  
+44 (0)20 7599 9600  
info@simpsonhaugh.com

© SimpsonHaugh 2017